

Finest Treble Booster

MODEL
BM-Q

EXCLUSIVE BY
BSM

BSM would like to congratulate you on the purchase of your **BM-Q Treble Booster!**

Brian May from **Queen** used in his early days the British Range Master Germanium Treble Booster, a unit produced between 1965 and 1969. This model is rebuilt as **RM** by **BSM**. In the mid-phase from Queen, Brian May switched to a silicon Treble Booster design for more bite, now reproduced by BSM with the original silicon transistor and called **BM-Q**.

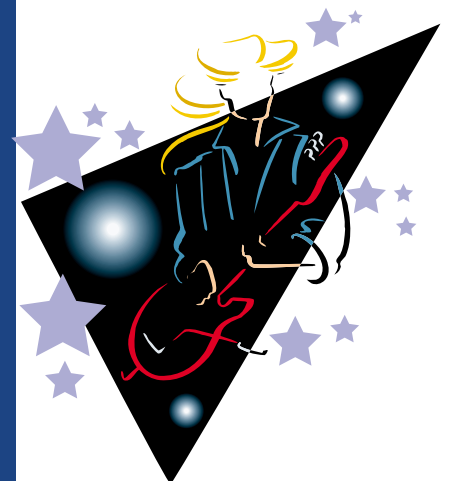
Almost all British rock guitarists using single coil pickup guitars used a Treble Booster from the late 60s to the mid 70s. By the end of the seventies, the Treble Booster was replaced by a new circuit from Japan, the so called Tube Screamer and other similar overdrive circuits. These were based on the old Treble Boosters and therefore had a very similar frequency response. The boosters on the other hand, sadly fell into oblivion despite their unique and inimitable sound.

The **BM-Q** Treble Booster has been specifically designed for single coil and humbucking pickups with a relatively low/medium inductance, such as pickups in Fender, Gretsch, Burns or Gibson guitars. On these pickups, the **BM-Q** produces (with the volume control of the guitar turned up to the max) a fat, biting and penetrating lead sound, minus any shrill characteristics. By lowering the guitars volume control, many shades of crunch can be easily dialed in. Another thing to consider is that when a guitar amps volume is turned up (reaching saturation), the power amp normally begins to mute the highs, which results in a duller sound. At an amps full tilt, the **BM-Q** Treble Booster allows a more transparent tone (covering the entire frequency range) to shine through. The presence control on the amp need only be minimally used (if at all). When vintage amps are used (such as the Fender Deluxe, Fender Bassman, Vox AC30, Marshall JTM 45 or Marshall Plexi) it is amazing what effect the use of a good treble booster has.

It is also of interest to note that Brian May used a couple of VOX AC30 combos with the **BM-Q** in front of the „Normal channel by volume setting three quarter of full.

The Treble Booster is inserted between guitar and amplifier, not into the FX loop. The magical tone is achieved by the interaction between guitar pickup, treble booster and amplifier. The unit is powered by a 9V battery with a current consumption of aprox. 500 μ A. The average output level is 10dBm, the maximum output voltage when the strings are struck really hard is 7V max.

M a d e i n G e r m a n y



Enjoy your BM-Q and good rocking' ...